

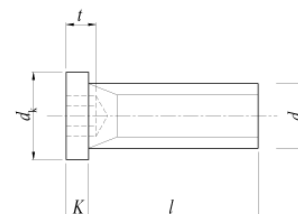
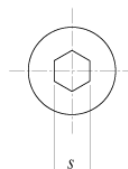
極低頭小頭ボルト

概要 鋼製（黒染）

詳細 ■材質：SCM435 ■強度区分：10.9 ■駆動部の形状：六角穴

代表品番

KEH



d	M3	M4	M5	M6	M8	M10	
d_k	4.5	5.5	7	8.5	10	13	
k	1.3	1.5	1.5	1.5	1.5	1.5	
s	1.5	2	3	3	4	5	
t_{max}	2	2.5	3	4	5	5	
l	5	KEH0305					
	6	KEH0306	KEH0406				
	8	KEH0308	KEH0408	KEH0508	KEH0608		
	10	KEH0310	KEH0410	KEH0510	KEH0610	KEH0810	
	12	KEH0312	KEH0412	KEH0512	KEH0612	KEH0812	KEH1012
	16		KEH0416	KEH0516	KEH0616	KEH0816	KEH1016
	20		KEH0420	KEH0520	KEH0620	KEH0820	KEH1020
	25			KEH0525	KEH0625	KEH0825	KEH1025
30					KEH0830	KEH1030	