

極低頭小頭ボルト

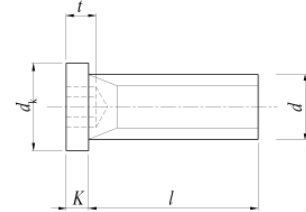
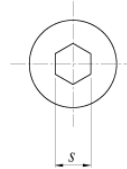
代表品番

KSEH

概要 ステンレス鋼製

詳細 ■材質：A2 (JIS B 1054-1 鋼種区分)

■駆動部の形状：六角穴



$d$	M3	M4	M5	M6	M8	M10	
$d_k$	4.5	5.5	7	8.5	10	13	
$k$	1.3	1.5	1.5	1.5	1.5	1.5	
$s$	1.5	2	3	3	4	5	
$t_{max}$	2	2.5	3	4	5	5	
$l$	5	KSEH0305					
	6	KSEH0306	KSEH0406				
	8	KSEH0308	KSEH0408	KSEH0508	KSEH0608		
	10	KSEH0310	KSEH0410	KSEH0510	KSEH0610	KSEH0810	
	12	KSEH0312	KSEH0412	KSEH0512	KSEH0612	KSEH0812	KSEH1012
	16		KSEH0416	KSEH0516	KSEH0616	KSEH0816	KSEH1016
	20		KSEH0420	KSEH0520	KSEH0620	KSEH0820	KSEH1020
	25			KSEH0525	KSEH0625	KSEH0825	KSEH1025
30					KSEH0830	KSEH1030	